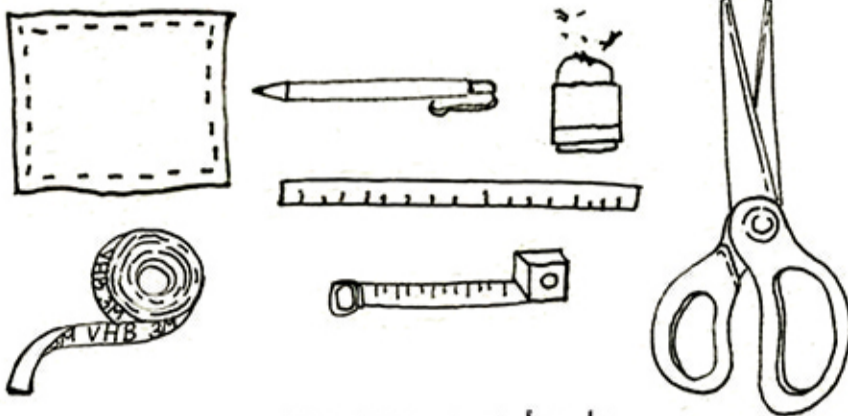


How to Attach TinHomeToy Alphabets & Numbers

1



prepare your tools

2



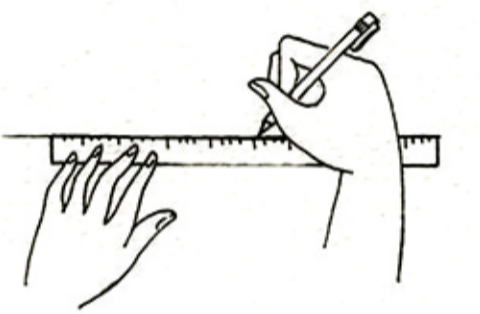
clean the surface you wish to attach

3



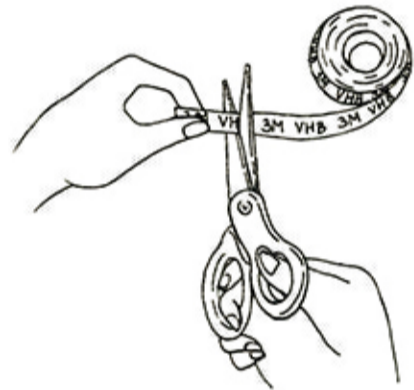
measure the alphabets

4



make the guideline on the surface

5



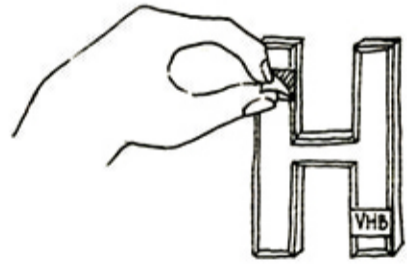
use '3m VHB' tape for outdoor use

6



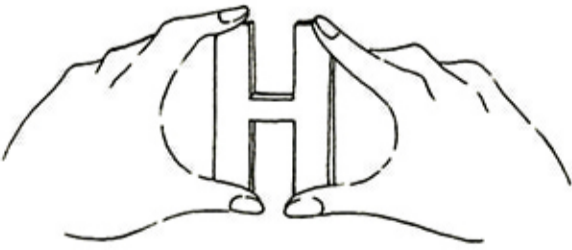
attach on the alphabets

7



remove the protection paper

8



attach the alphabets on the surface

9



use guided tape to support the alphabets and leave it for 24 hrs

10



after 24 hrs, take out the supported tape and here you go!